



MARKET APARTMENTS | ROMAN ROAD, E3



DESCRIPTION

AJV Developments held a stake in a joint venture partnership in Bow, London, E3.
The site was purchased unconditionally with no planning permission. Our dedicated team obtained planning permission for the construction of a 3 storey building plus basement to create 6 boutique apartments and 2 commercial retail units.



CONTACT **AJV** DEVELOPMENTS

London Office

397 Roman Road
Bow
London
E3 5QS

Essex Office

118 Collier Row Rd
Romford
Essex
RM5 2BB

020 8880 6660

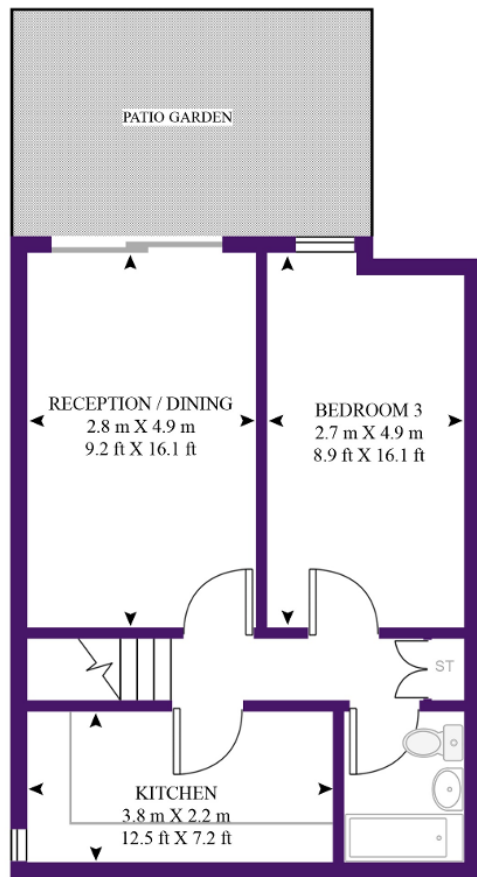
info@ajvdevelopments.com
www.ajvdevelopments.com



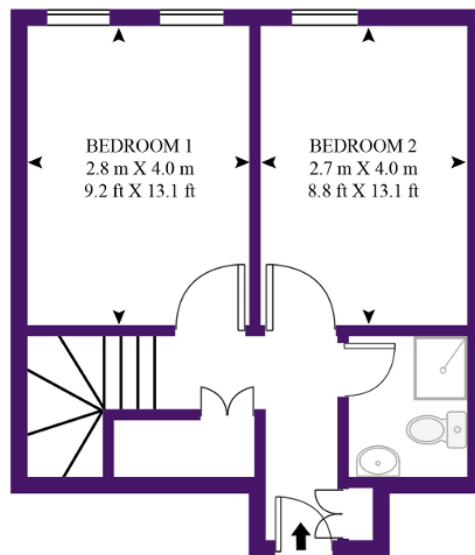


UNIT 1, ROMAN ROAD

APPROXIMATE GROSS INTERNAL FLOOR AREA 966 SQ.FT (89.81 SQ.M)



LOWER GROUND FLOOR



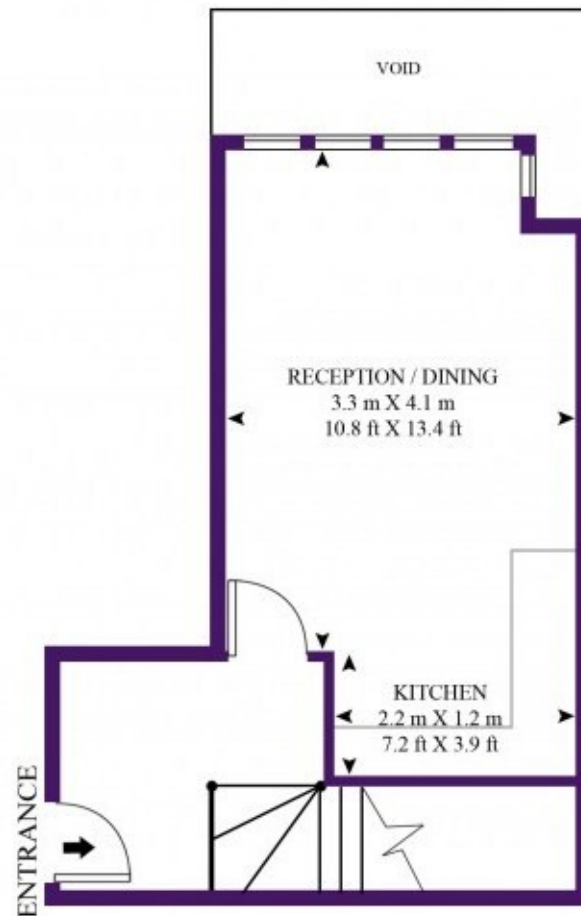
ENTRANCE
GROUND FLOOR

UNIT 2, ROMAN ROAD

APPROXIMATE GROSS INTERNAL FLOOR AREA 582 SQ.FT (54.1 SQ.M)



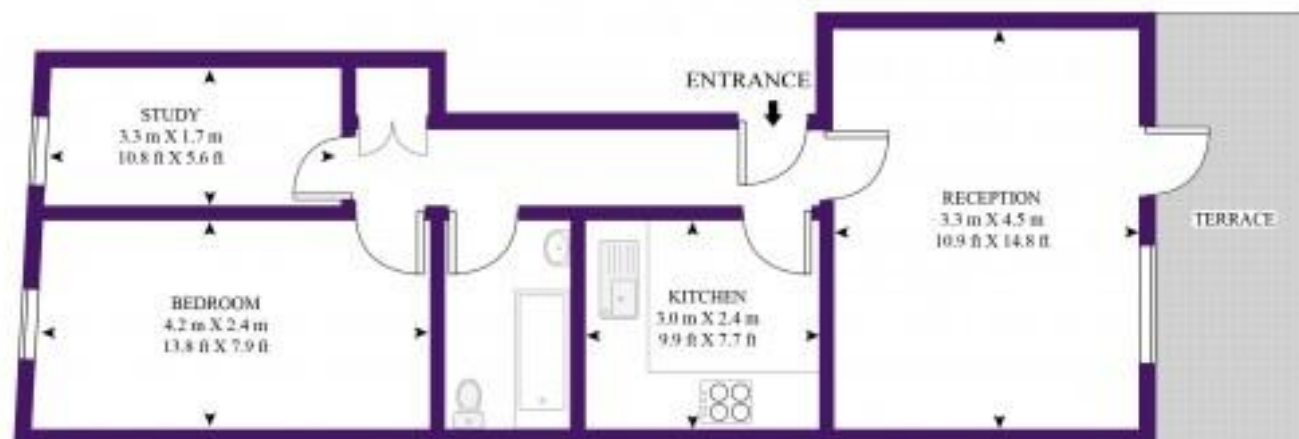
LOWER GROUND FLOOR



GROUND FLOOR

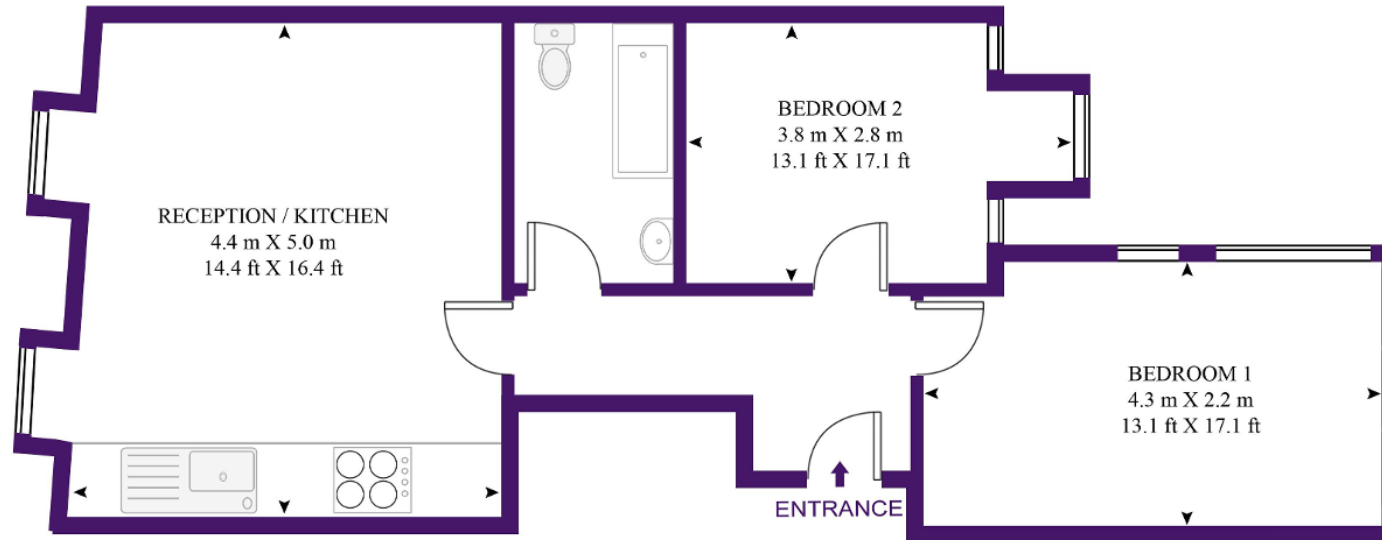
UNIT 4, ROMAN ROAD

APPROXIMATE GROSS INTERNAL FLOOR AREA 546 SQ.FT (50.74 SQ.M)



UNIT 5, ROMAN ROAD

APPROXIMATE GROSS INTERNAL FLOOR AREA 544 SQ.FT (50.55 SQ.M)



UNIT 6, ROMAN ROAD

APPROXIMATE GROSS INTERNAL FLOOR AREA 444 SQ.FT (41.23 SQ.M)

